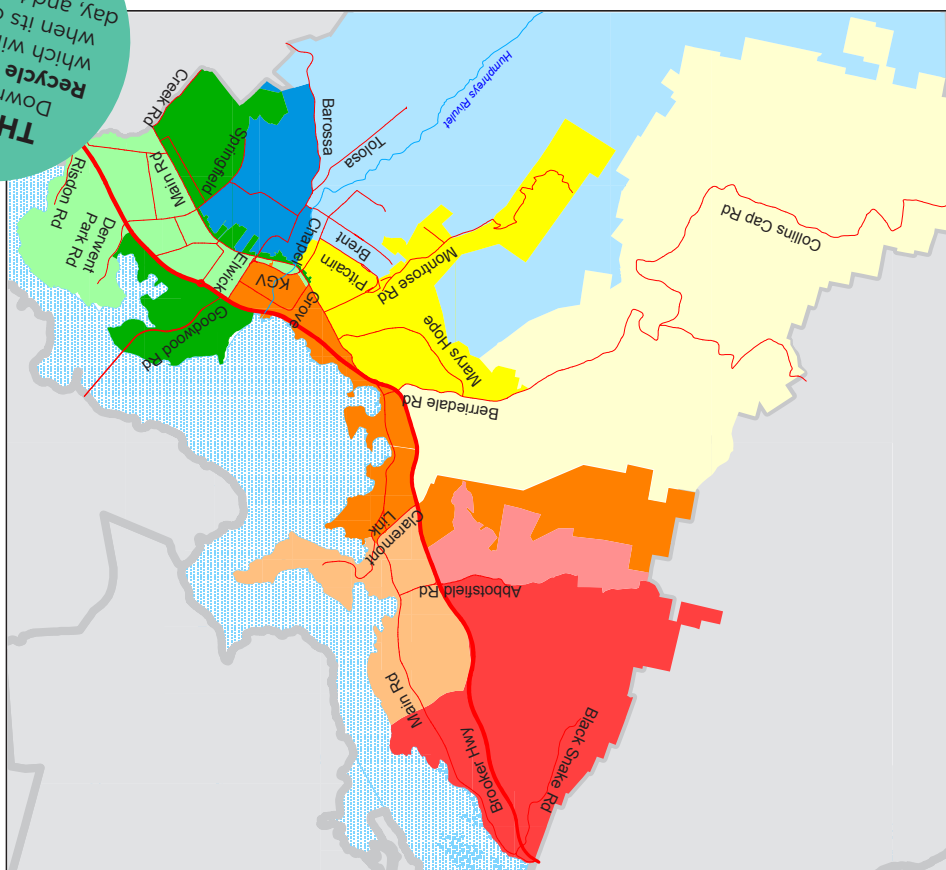


Please refer to calendar on front page for collection week



Map data supplied by:
GCC, Glenorchy City Council,
Halls/Tas State of Tasmania.

Waste/Recycling Collection	
Fortnightly pickup:	Week 1: 7/7/25 Week 2: 30/6/25
FOGO Collection	
the same day but opposite week to waste and recycling	
shared bins will be collected twice weekly	
Tuesday - FOGO	
Friday - Waste/ Recycle	

GET THE APP
Download the Recycle Coach app which will alert you when its collection day, and tell you what you can and can't recycle!



Waste/ Recycling/ FOGO Guide

JULY 2025 - JUNE 2026



GLENORCHY
CITY COUNCIL

JULY 2025	AUGUST 2025	SEPTEMBER 2025	OCTOBER 2025	NOVEMBER 2025	DECEMBER 2025
S M T W T F S	S M T W T F S	S M T W T F S	S M T W T F S	S M T W T F S	S M T W T F S
1 2 3 4 5	31 1 2	1 2 3 4 5 6	1 2 3 4	30 1	1 2 3 4 5 6
6 7 8 9 10 11 12	3 4 5 6 7 8 9	7 8 9 10 11 12 13	5 6 7 8 9 10 11	2 3 4 5 6 7 8	7 8 9 10 11 12 13
13 14 15 16 17 18 19	10 11 12 13 14 15 16	14 15 16 17 18 19 20	12 13 14 15 16 17 18	9 10 11 12 13 14 15	14 15 16 17 18 19 20
20 21 22 23 24 25 26	17 18 19 20 21 22 23	21 22 23 24 25 26 27	19 20 21 22 23 24 25	16 17 18 19 20 21 22	21 22 23 24 25 26 27
27 28 29 30 31	24 25 26 27 28 29 30	28 29 30	26 27 28 29 30 31	23 24 25 26 27 28 29	28 29 30 31
JANUARY 2026	FEBRUARY 2026	MARCH 2026	APRIL 2026	MAY 2026	JUNE 2026
S M T W T F S	S M T W T F S	S M T W T F S	S M T W T F S	S M T W T F S	S M T W T F S
1 2 3	1 2 3 4 5 6 7	1 2 3 4 5 6 7	1 2 3 4	31 1 2	1 2 3 4 5 6
4 5 6 7 8 9 10	8 9 10 11 12 13 14	8 9 10 11 12 13 14	5 6 7 8 9 10 11	3 4 5 6 7 8 9	7 8 9 10 11 12 13
11 12 13 14 15 16 17	15 16 17 18 19 20 21	15 16 17 18 19 20 21	12 13 14 15 16 17 18	10 11 12 13 14 15 16	14 15 16 17 18 19 20
18 19 20 21 22 23 24	22 23 24 25 26 27 28	22 23 24 25 26 27 28	19 20 21 22 23 24 25	17 18 19 20 21 22 23	21 22 23 24 25 26 27
25 26 27 28 29 30 31		29 30 31	26 27 28 29 30	24 25 26 27 28 29 30	28 29 30

WEEK 1 **WEEK 2** (Please refer to the back page.) Should public holidays occur on a weekday wheelie bin collection will take place as normal.
Please Note: Christmas Day collection will be **SATURDAY 27th December 2025** - No Change to Easter 2026 collection.
FOGO collection is the same day, opposite week to your waste and recycling

For more information call (03) 6216 6800 or visit www.gcc.tas.gov.au or download the **Recycle Coach** phone app.

YOUR WASTE SERVICES

GENERAL WASTE

All residents have a **standard 140L dark green lid wheelie bin** to be used for collection of general household garbage each fortnight. For unit developments you may have a 240L Red Lid bin which will be shared and collected each week. To check your collection day, please use the map on the back page of this brochure.

Please observe these requirements to assist with your general waste collection:

- The bins are for domestic waste only. Do not put bricks, heavy timber or steel in the bin. These materials can damage the collection equipment.
- No paint, chemicals, liquids or motor oil.
- Bag all items, especially dust and loose materials to prevent jamming and avoid spillage during collections.

RECYCLING

All residents also have a **240L yellow lid wheelie bin** to be used for collection of recycling materials. Recycling collections occur on the same day as garbage collections, fortnightly for household bins. Unit developments with shared bins will be collected on a weekly basis. Read more about recycling on the yellow Recycling page.

FOGO

Residents may also have a **240L lime green lid wheelie bin** for the collection of FOGO (Food Organics Garden Organics) collected fortnightly, and weekly for units with Shared wheelie bins. Read more about this on lime green FOGO page.

ADDITIONAL SERVICE

For Refuse bins only, there is an option to receive a weekly collection at a cost. Please contact Veolia directly on 03 6244 0000 for further information.

STANDARD SERVICES

BIN REPAIRS, REPLACEMENTS & NEW SERVICES

Bins will be delivered and repaired on Friday each week. Application Forms and Requests must be received by 2pm Thursday, may change at the discretion of Council. For more information please contact Glenorchy City Council Customer Service on 03 6216 6800 or visit www.gcc.tas.gov.au.

DRIVER TO COLLECT

Please note that Glenorchy City Council provides a Driver to Collect service for some residents. Conditions apply, please contact Glenorchy City Council Customer Service on 03 6216 6800.

BIN AUDIT PROGRAM

Glenorchy City Council randomly check garbage/recycling/ FOGO bins for incorrect contents. If your bin has been stickered please remove the incorrect content and call Council's Customer Service to have the bin collected.

TIPS TO ENSURE YOUR BINS ARE COLLECTED

- Place your bin out for collection the night before or no later than 6am on collection day.
- Don't place your bin behind a parked car or other obstacle. Make sure there is a distance of at least 1 metre between your bins and any obstacles such as a pole or tree.
- Bins must face the road with handles facing your house.
- Don't overfill the bin. The lid should be fully closed. Max 70kg.
- Do not place rubbish beside or on top of the bin.
- Remove your bins from the kerb after collection within 48 hours.
- Number your bin lid to protect against loss or theft.
- Bins remain the property of Glenorchy City Council.
- Bins must remain at the allocated property and not removed.
- Don't put lawn clippings/garden waste or food waste into your garbage or recycling bins. Please use your FOGO bin



MISSED BINS
If your bin collection has been missed, please contact Glenorchy City Council Customer Service on 03 6216 6800.

GET THE APP
Download the **Recycle Coach** app, which will alert you to bin collection days and more.

YOUR WASTE SERVICES

KERBSIDE RECYCLING

For Households, recycling collections occur on the same day as garbage collections, fortnightly. Unit developments with shared bins will be collected on a weekly basis.

(Refer to map on back page.)

REMEMBER

- Ensure containers are clean and empty
- Loose items only – do not bag
- NO plastic bags or bin liners
- Remove lids

Please refer to the Councils Web Site, or download the Recycle Coach app if you are unsure.

If your bin is blown or knocked over, please pick up the contents and place back in your bin, to prevent it entering the stormwater system and causing litter in the street, then call Glenorchy City Council's Customer Service on 03 6216 6800 for the contractor to return to empty your bin. Council has **FREE** bin latches for Recycling Bins to help keep lids closed to prevent spillage.

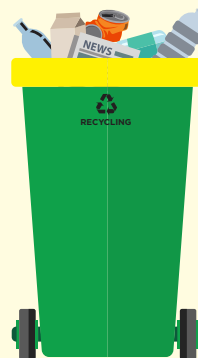
KERBSIDE RECYCLING TIPS

- Accidentally or carelessly mixing household waste into a recycling bin can make your recycling efforts a waste of time.
- Non-recyclables put into your recycling bin can contaminate an entire truck load of what could have been recycled but instead ends up in landfill.
- When it comes to recycling, if in doubt – leave it out! Better still find out yourself by visiting www.wastestartswithu.com.au or download the Recycle Coach app.
- By recycling, you help to look after the environment.
- Recycling reduces the amount of minerals dug up and trees cut down.
- Making products out of recyclable materials saves energy, reduces water use and cuts the amount of pollution and greenhouse gases we create.
- Purchase goods made from recycled material.

✗ NO YOU CAN'T

Plastic bags	Whitegoods	Green waste
Nappies	China ware	Furniture
Polystyrene	Electrical goods	Car parts
Batteries	Clothes	Shoes
Wood	Old tools	Glass panes
String/rope	Paint/cleaners	Oil
Plastic film wrap	Coat hangers	Computers
Ceramics	Building materials	Rubber

For further information on recycling please refer to Councils web site
<https://www.gcc.tas.gov.au/services/waste/recycling-collection/>



GET THE APP
Download the **Recycle Coach** app, which will tell you what you CAN and CAN'T recycle.

✓ YES YOU CAN

GLASS
Bottle and jars
(lids removed)



PAPER
Newspaper, office
paper and junk mail
(not shredded)



CARDBOARD
Milk cartons and
boxes (flattened)



PLASTIC
Juice and soft drink
containers



METAL
Aluminium
and Tin cans



KERBSIDE RECYCLING

JACKSON ST WASTE MANAGEMENT CENTRE

OPENING HOURS:

Monday-Friday 7:30am – 4:00pm

Saturday 9:00am – 4:00pm

Sunday 9:30am – 4:00pm

Closed Christmas Day, Boxing Day and Good Friday

No domestic asbestos accepted after 2:30pm any day.

No commercial/trailer loads of waste/green waste accepted after 3.30pm on any day.

Lithium batteries start fires. Please dispose of at a Recycling Centre – NOT Landfill

Some of the potential environment and public health issues related to landfill include:

- Loss of resources
- Dust and odour issues
- Land availability
- Greenhouse gas emissions
- Water contamination
- Noise issues
- Litter

In windy and extreme weather conditions the landfill disposal area may be closed for access and safety reasons. You may be asked to wait in your vehicle for short periods of time for safety reasons when waste is being covered and compacted.

When using the landfill please follow the signs and any directions given by tollbooth or landfill staff. The landfill has designated areas for waste including green organics, tyres, whitegoods/metal, concrete and recyclables. Controlled waste by prior arrangement.

For further information and to check if the Landfill is closed please refer to Councils Landfill web site
<https://jacksonstlandfill.com.au>

DOMESTIC ASBESTOS DISPOSAL AND SPECIAL BURIAL

Council NO longer accepts commercial disposal of Asbestos, Controlled Waste or Special Burial

The Jackson Street Landfill is licensed to accept domestic loads of asbestos

Packaging of all waste asbestos products must comply with the Work Health and Safety Regulations 2012 and should also adhere to the guidelines set out by Glenorchy City Council for domestic disposal.

These guidelines are available at www.jacksonstlandfill.com.au or by phoning toll booth 03 6216 6712 or customer service on 03 6216 6800.

Please note: Under NO circumstances should asbestos be placed in the Kerbside waste/recycling/FOGO bins.

For further information on asbestos in your home please contact WorkSafe Tasmania on 1300 366 322 or visit www.asbestosawareness.com.au

TASMANIAN GOVERNMENT LANDFILL LEVY

What is the Tasmania Government Landfill Levy?

The landfill levy was introduced on 1st July 2022 and is a Tasmanian Government fee placed on waste material sent to landfill for disposal.

The Landfill Levy will increase to \$45.84 per tonne at the gate on 1st July 2025. The levy is to encourage people to reduce waste and to re-use, repurpose or recycle materials instead of sending materials to landfill. Funds will be reinvested in resource recovery, recycling initiative and education across Tasmania. The introduction of a waste levy is a long-term approach to improving waste management and resource recovery in Tasmania.

For more information on the state-wide levy please visit the Department of Natural Resources and Environment Tasmania (NRE) website:

<https://nre.tas.gov.au/environmental-management/waste-and-resource-recovery/landfill-levy-faqs>

JACKSON STREET LANDFILL DISPOSAL CHARGES 2025/26

All charges include Tasmanian Government Landfill Levy (unless stated below) of \$45.84 per tonne from 1st July 2025

WASTE TYPE	CHARGES
Minimum gate fee	\$17 per visit
Passenger tyres (Levy N/A)	\$14 each
Passenger tyres with rim (Levy N/A)	\$24 each
Light truck/4wd tyres (Levy N/A)	\$24 each
Light truck/4wd tyre with Rim (Levy N/A)	\$47 each
Clean fill (conditions apply)	\$82 per tonne
Brick / Concrete / Rubble	\$143 per tonne
Clean Timber & Wood Waste	\$130 per tonne
Green waste/vegetation (Domestic) GCC residents (Cars & single axle trailers only)	\$141 per tonne
Green waste/vegetation (Commercial)	\$165 per tonne
General waste – domestic GCC residents (cars and single axle trailers only)	\$160 per tonne
General waste – non-GCC residents	\$207 per tonne
Mixed waste – commercial/industrial/demolition/construction	\$300 per tonne
Metal (Levy N/A)	\$128 per tonne
Domestic quantity of double wrapped asbestos (Levy N/A)	\$59 boot load \$116 small trailer load
Mattresses	\$35

* A driver's licence or valid ID will need to be shown to the tollbooth operator to receive the discounted general waste rate

★ADVERSE WEATHER CONDITIONS MAY FORCE LANDFILL CLOSURES★

Please visit jacksonstlandfill.com.au for opening hours.
THE DISCRETION OF THE TOLLBOOTH OPERATOR IS FINAL

waste management

It all comes back to U.



JACKSON ST WASTE MANAGEMENT CENTRE

WHAT YOU CAN DO TO MAKE A DIFFERENCE

REDUCE YOUR WASTE GOING TO LANDFILL

- Try to choose items with the least amount of packaging.
- Try to choose items made from recycled material or items that can be recycled.
- Place food scraps into FOGO bin.
- Place a 'No Junk Mail' sticker on your letterbox.
- Give unwanted items to charities or hold a garage sale.
- Make lunches for work and school that contain no rubbish and only use recyclable or reusable containers.

SOFT PLASTIC DISPOSAL

Major supermarket chains are no longer able to accept or collect soft plastics due to the REDcycle scheme no longer being in operation.

Please DO NOT place soft plastics in your Recycling Bin, they cannot be recycled by the kerbside collection method.

Until a solution is found soft plastics are to be placed in your Waste wheelie bin.

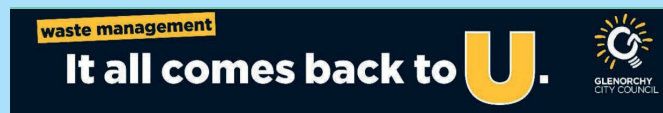
THE 5 R'S

REFUSE, REDUCE, REUSE, REPURPOSE, RECYCLE - Help make a Difference.

Adopting the 5 Rs helps conserve energy and natural resources. Using the 5 Rs can help to reduce pollution, reduce plastic and organic waste, and reduces the amount of waste going to landfill.

Please think about your options before discarding unwanted goods and waste. We cannot completely stop producing waste, but everyone can help to reduce it.

Waste starts with U and ends with all of US



RECYCLING CENTRE

Glenorchy's Recycling Centre provides a convenient facility for the disposal of recyclables and is located at the Jackson Street Waste Management Centre, Glenorchy.

Items accepted:

- Glass (bottles and jars)
- Paper (newspaper and magazines)
- Cardboard (milk cartons and boxes)
- Plastic (juice and soft drink bottles)
- Aluminium and steel cans

Household Hazardous Waste Facility accepts: vehicle batteries, paint, gas bottles and motor oil.

All goods are the property of the Glenorchy City Council.

OPERATING HOURS:

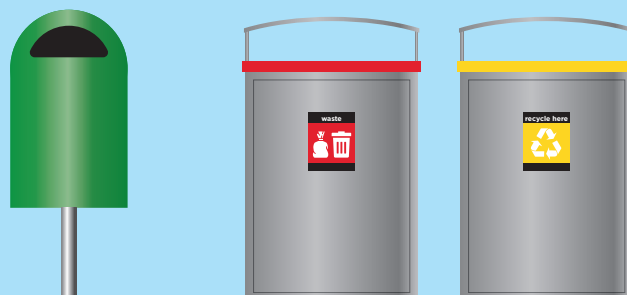
Monday - Friday 7:30am - 4:00pm

Saturday 9:00am - 4:00pm

Sunday 9:30am - 4:00pm.

The facility is closed Good Friday, Christmas Day and Boxing Day.

For more information please contact Glenorchy City Council Customer Service on 03 6216 6800.



PUBLIC LITTER BINS

There are 300 public litter waste bins throughout Glenorchy, including at sports grounds, parks and reserves, shopping centres, bus stops and main roads. These are either 60L pole-mounted bins or 140L red or silver top bins.

Council provides yellow top recycling bins along the Main Rd in Glenorchy and at the front of the Council Chambers. Public Recycling Bins will be expanded to other areas in 2025. Managing litter is everyone's responsibility. Not only is it unsightly and costly, it can end up in our stormwater systems, streams, rivers and oceans, harming the local fauna and flora.

To help reduce the impact of litter, we can make better choices about the type of packaging we buy, how we dispose of rubbish and what action we take upon witnessing illegal dumping.

If you see anyone littering please do the right thing and contact the Tasmanian Litter hotline on **1300 135 513** or visit rubbish.epa.tas.gov.au. All enquiries regarding Council litter bins please contact Glenorchy City Council Customer Service **03 6216 6800**.

RECYCLE REWARDS PROGRAM

Recycle Rewards Program started on May 1st 2025 and is an initiative of the Tasmanian Government which aims to reduce litter in our Community.

Drink containers make up 45% of Tasmania's litter by volume. The container refund scheme will reduce this substantially leading to cleaner streets, parks and beaches and reducing the amount of drink containers in landfill. You can return most aluminium, glass, plastic and carton drink containers.

When you recycle with Recycle Rewards you will receive a 10 cent refund for each container deposited in the Reverse Vending Machines which are located in various locations across the state.

There are multiple ways to receive your refund, or you can choose an organisation to donate your refund to.

To find out more, and where your nearest Reverse Vending Machine is please go to:

<https://recyclerewards.com.au/> or call **1800 237 827**

You can also download the **Recycle Rewards App** to your mobile device which gives more access to a range of key features. Details are on the web site.



WHAT YOU CAN DO TO MAKE A DIFFERENCE

FOGO (FOOD ORGANICS GARDEN ORGANICS)

Glenorchy City Council provides a fortnightly FOGO (Food Organics Garden Organics) kerbside collection service. The FOGO wheelie bin has a lime green lid and is collected on the **same day but opposite week** to your waste/recycling collection. If you live in a unit development that shares wheelie bins, your FOGO is collected weekly on Tuesdays.

WHY FOGO ?

The FOGO service greatly reduces the amount of organic waste going into landfills, where it produces greenhouse gases and toxic liquid called 'leachate' as it decomposes. On 1st July 2022 the Tasmania Government introduced a state wide Landfill Levy - FOGO reduces the total amount of waste going to landfill and will help save all stakeholders these costs.

FOGO is a convenient and environmentally friendly way to dispose of all food scraps and any garden waste. FOGO waste is treated by an Industrial Composter using an EPA tested, Australian Standard process that turns it into healthy, safe compost for use by farmers and gardeners.

For further information please refer to Councils WastestartswithU web site <https://wastestartswithu.com.au>

✗ NO YOU CAN'T

PLASTICS (NO plastic bags not even biodegradable) this means no

- Plastics
- Nappies
- Fabric (e.g. clothing)
- Hard waste or broken household items
- Plastic take-away containers
- Hazardous or contaminated waste
- Thick branches
- Nothing that is currently allowed to go in your recycling bin.

GET THE APP
Download the **Recycle Coach** app, which will tell you what you CAN and CAN'T put in FOGO.



✓ YES YOU CAN

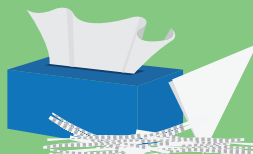
COOKED AND RAW MEAT
Vegetables, seafood, dairy, meat and bones (cooked or raw), teabags, coffee grounds, egg shells

GARDEN WASTE
Grass clippings, leaves, bark, twigs and weeds

PAPER
Shredded paper, paper towels, Pizza boxes, paper napkins and tissues

ANIMAL WASTE
Cat and dog poo, organic kitty litter and soiled paper from bird cages

PERSONAL CUTTINGS
Hair, nails clippings and pet hair



HOW TO FOGO

Glenorchy City Council provides a **FOGO Tip Sheet** that will make FOGO separation quick, easy and clean - this can be downloaded from our waste website www.wastestartswithu.com.au, where you can also find a long list of items that can go in a FOGO bin.

Any questions please call Glenorchy City Council's Customer Service on 03 6216 6800. or visit www.gcc.tas.gov.au/waste

WHAT KIND OF BIN BAGS CAN I USE?

If you want to put bags in the FOGO caddy or bin, they must be compostable. Biodegradable and plastic bags should NOT be used, as these can break down into smaller fragments of plastic. As alternative, line your bin with newspaper or paper towel.

FOGO EXEMPT

Council recognises that some people might not need or be able to use the FOGO service. This includes if you already compost your own food/garden waste, have exceptional or unusual circumstances.

To see if you may be eligible for FOGO Exemption please visit <https://www.gcc.tas.gov.au/services/waste/fogo-collection/>

FOGO (FOOD ORGANICS GARDEN ORGANICS)