



Waste/ Recycling/ FOGO Guide



GLENORCHY
CITY COUNCIL

JULY 2021-JUNE 2022

JULY 2021	AUGUST 2021	SEPTEMBER 2021	OCTOBER 2021	NOVEMBER 2021	DECEMBER 2021
S M T W T F S 1 2 3 4 5 6 7 8 9 10 11 12 13 14 15 16 17 18 19 20 21 22 23 24 25 26 27 28 29 30 31	S M T W T F S 1 2 3 4 5 6 7 8 9 10 11 12 13 14 15 16 17 18 19 20 21 22 23 24 25 26 27 28 29 30 31	S M T W T F S 1 2 3 4 5 6 7 8 9 10 11 12 13 14 15 16 17 18 19 20 21 22 23 24 25 26 27 28 29 30	S M T W T F S 31 1 2 3 4 5 6 7 8 9 10 11 12 13 14 15 16 17 18 19 20 21 22 23 24 25 26 27 28 29 30	S M T W T F S 1 2 3 4 5 6 7 8 9 10 11 12 13 14 15 16 17 18 19 20 21 22 23 24 25 26 27 28 29 30	S M T W T F S 1 2 3 4 5 6 7 8 9 10 11 12 13 14 15 16 17 18 19 20 21 22 23 24 25 26 27 28 29 30 31
JANUARY 2022	FEBRUARY 2022	MARCH 2022	APRIL 2022	MAY 2022	JUNE 2022
S M T W T F S 30 31 1 2 3 4 5 6 7 8 9 10 11 12 13 14 15 16 17 18 19 20 21 22 23 24 25 26 27 28 29	S M T W T F S 1 2 3 4 5 6 7 8 9 10 11 12 13 14 15 16 17 18 19 20 21 22 23 24 25 26 27 28	S M T W T F S 1 2 3 4 5 6 7 8 9 10 11 12 13 14 15 16 17 18 19 20 21 22 23 24 25 26 27 28 29 30 31	S M T W T F S 1 2 3 4 5 6 7 8 9 10 11 12 13 14 15 16 17 18 19 20 21 22 23 24 25 26 27 28 29 30	S M T W T F S 1 2 3 4 5 6 7 8 9 10 11 12 13 14 15 16 17 18 19 20 21 22 23 24 25 26 27 28 29 30 31	S M T W T F S 1 2 3 4 5 6 7 8 9 10 11 12 13 14 15 16 17 18 19 20 21 22 23 24 25 26 27 28 29 30

WEEK 1 **WEEK 2** (Please refer to the back page.) Should public holidays occur on a weekday wheelie bin collection will take place as normal.
Please Note: There are no other changes during Christmas/New Year period 2021 or Easter 2022
FOGO collection is the same day, opposite week to your waste and recycling

For more information visit www.wastestartswithu.com.au or download the **Recycle Coach** phone app.

FOGO (FOOD ORGANICS GARDEN ORGANICS)

Glenorchy City Council provides a fortnightly FOGO (Food Organics Garden Organics) kerbside collection service. The FOGO wheelie bin has a lime green lid and is collected on the **same day but opposite week** to your waste/recycling collection. If you live in a unit development that shares wheelie bins, your FOGO is collected weekly on Tuesdays.

WHY FOGO ?

The FOGO service greatly reduces the amount of organic waste going into landfills, where it produces greenhouse gases and toxic liquid called 'leachate' as it decomposes. State and Federal legislation and waste levies on landfills are also expected in the near future—FOGO reduces the total amount of waste going to landfill and will help save all rate payers these future costs.

FOGO is a convenient and environmentally friendly way to dispose of all food scraps and any garden waste, leaving more room in your existing waste bin. FOGO waste is treated by an Industrial Composter using an EPA tested, Australian Standard process that turns it into healthy, safe compost for use by farmers and gardeners.

✗ NO YOU CAN'T

PLASTICS (NO plastic bags not even biodegradable) **this means no**

- Plastics
- Nappies
- Fabric (e.g. clothing)
- Hard waste or broken household items
- Plastic take-away containers
- Hazardous or contaminated waste
- Thick branches
- Nothing that is currently allowed to go in your recycling bin.

GET THE APP
Download the **Recycle Coach** app, which will tell you what you **CAN** and **CAN'T** put in FOGO.



✓ YES YOU CAN

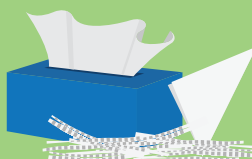
COOKED AND RAW MEAT
Vegetables, seafood, dairy, meat and bones (cooked or raw), teabags, coffee grounds, egg shells

GARDEN WASTE
Grass clippings, leaves, bark, twigs and weeds

NEWSPAPER
Shredded paper, paper towels, paper napkins and tissues

ANIMAL WASTE
Cat and dog poo, organic kitty litter and soiled paper from bird cages

PERSONAL CUTTINGS
Hair, nails clippings and pet hair



HOW TO FOGO

Glenorchy City Council provides a **FOGO Tip Sheet** that will make FOGO separation quick, easy and clean - this can be downloaded from our waste website www.wastestartswithu.com.au, where you can also find a long list of items that can go in a FOGO bin.

WHAT KIND OF BIN BAGS CAN I USE?

If you want to put bags in the FOGO caddy or bin, they must be compostable. Biodegradable and plastic bags should NOT be used, as these can break down into smaller fragments of plastic. As alternative, line your bin with newspaper or paper towel.

Any questions, or to have a copy of the FOGO Tip Sheet mailed to you, please call Glenorchy City Council's Customer Service on 03 6216 6800.

FOGO (FOOD ORGANICS GARDEN ORGANICS)

YOUR WASTE SERVICES

GENERAL WASTE

All residents have a **dark green lid wheelie bin** to be used for collection of general household garbage each fortnight. For unit developments you may have a 240L Red Lid bin which will be shared and collected each week. To check your collection day, please use the map on the back page of this brochure.

Please observe these requirements to assist with your general waste collection:

- The bins are for domestic waste only. Do not put bricks, heavy timber or steel in the bin. These materials can damage the collection equipment.
- No paint, chemicals, liquids or motor oil.
- Bag all items, especially dust and loose materials to prevent jamming and avoid spillage during collections.

RECYCLING

All residents also have a **yellow lid wheelie bin** to be used for collection of recycling materials. Recycling collections occur on the same day as garbage collections, fortnightly for household bins. Unit developments with shared bins will be collected on a weekly basis. *(Read more about recycling on the yellow Recycling page.)*

FOGO

Residents may also have a **lime green lid wheelie bin** for the collection of FOGO (Food Organics Garden Organics) collected fortnightly, and weekly for units with Shared wheelie bins *(read more about this on lime green FOGO page).*

ADDITIONAL SERVICE

For Waste bins only, there is an option to receive a weekly collection at a cost. Please contact Veolia directly on 03 6244 0000 for further information.

STANDARD SERVICES

BIN REPAIRS, REPLACEMENTS & NEW SERVICES

Bins will be delivered and repaired on Friday each week. Application Forms and Requests must be received by 2pm Thursday. For more information please contact Glenorchy City Council Customer Service on 03 6216 6800 or visit www.gcc.tas.gov.au.

DRIVER TO COLLECT

Glenorchy City Council provides a Driver to Collect service for some residents. Conditions apply, please contact Glenorchy City Council Customer Service on 03 6216 6800.

BIN AUDIT PROGRAM

Glenorchy City Council randomly check garbage/recycling/FOGO bins for incorrect contents. If your bin has been stickered please remove the incorrect contents and call Council's Customer Service to have the bin collected.

TIPS TO ENSURE YOUR BINS ARE COLLECTED

- Place your bin out for collection the night before or no later than 6am on collection day.
- Don't place your bin behind a parked car or other obstacle. Make sure there is a distance of at least 1 metre between your bins and any obstacles such as a pole or tree.
- Bins must face the road with handles facing your house.
- Don't overfill the bin. The lid should be fully closed. Max 70kg weight.
- Do not place rubbish beside or on top of the bin.
- Remove your bins from the kerb after collection within 48 hours.
- Number your bin lid to protect against loss or theft.
- Bins remain the property of Glenorchy City Council.
- Bins must remain at the allocated property and not removed.
- Don't put lawn clippings/garden waste or food waste into your garbage or recycling bins. Please use your FOGO bin.



YOUR WASTE SERVICES

WHAT YOU CAN DO TO MAKE A DIFFERENCE

REDUCE YOUR WASTE GOING TO LANDFILL

- Try to choose items with the least amount of packaging.
- Try to choose items made from recycled material or items that can be recycled.
- Place food scraps into FOGO bin.
- Place a 'No Junk Mail' sticker on your letterbox.
- Give unwanted items to charities or hold a garage sale.
- Make lunches for work and school that contain no rubbish and only use recyclable or reusable containers.

SOFT PLASTIC DISPOSAL

CANNOT be recycled in your household recycling bin

You can recycle all your soft plastics at Coles and Woolworths supermarkets. These items can be made into products like outdoor furniture and play equipment. Soft plastic recycling is for DRY, CLEAN soft plastics ONLY.

The following items are accepted

- | | |
|--|---|
| • Biscuit packets (wrapper only – the tray can go in normal recycling) | • Bread bags |
| • Confectionery bags | • Chocolate and snack bar wrappers |
| • Chip and cracker packets (silver lined) | • Snap lock bags/zip lock bags |
| | • Some vegetable packaging – fresh and frozen |

Do the scrunch test

✓ If it's soft plastic and CAN be scrunched into a ball, it can be placed in the soft plastic recycle bin.

✗ If it's not plastic, or hard plastic that CAN'T be scrunched into a ball, it cannot be recycled in the soft plastic recycling bins.



FREE RECYCLING CENTRE

Glenorchy's Recycling Centre provides a convenient facility for the disposal of recyclables and is located at the Jackson Street Waste Management Centre, Glenorchy.

Items accepted:

- Glass (bottles and jars)
- Paper (newspaper and magazines)
- Cardboard (milk cartons and boxes)
- Plastic rigid containers 1-5 (Juice and soft drink bottles)
- Aluminium and tin cans

Household Hazardous Waste Facility accepts: vehicle batteries, paint, gas bottles and motor oil.

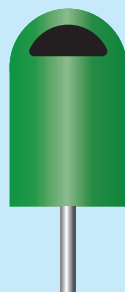
All goods are the property of the Glenorchy City Council.

OPERATING HOURS:

Monday - Friday 7:30am - 4:00pm
Saturday 9:00am - 4:00pm
Sunday 9:30am - 4:00pm.

The facility is closed Good Friday and Christmas Day.

For more information please contact Glenorchy City Council Customer Service on 03 6216 6800.



PUBLIC LITTER BINS

There are 540 public litter waste bins throughout Glenorchy, including at sports grounds, parks and reserves, shopping centres, bus stops and main roads. These are either 60L pole-mounted bins or 140L red or silver top bins.

Managing litter is everyone's responsibility. Not only is it unsightly and costly, it can end up in our stormwater systems, streams, rivers and oceans, harming the local fauna and flora.

To help reduce the impact of litter, we can make better choices about the type of packaging we buy, how we dispose of rubbish and what action we take upon witnessing illegal dumping.

If you see anyone littering please do the right thing and contact the Tasmanian Litter hotline on **1300 135 513** or visit rubbish.epa.tas.gov.au
All enquiries regarding Council litter bins please contact Glenorchy City Council Customer Service **03 6216 6800**

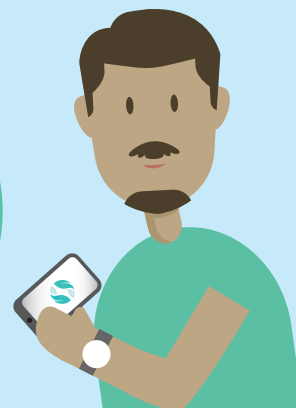


GO DIGITAL
Reduce paper waste by downloading this guide from our website.

waste management

It all comes back to U.

GET THE APP
Download the **Recycle Coach** app, which will give you recycling info, collection day alerts and more.



WHAT YOU CAN DO TO MAKE A DIFFERENCE

KERBSIDE RECYCLING

For households, recycling collections occur on the same day as garbage collections, fortnightly. Unit developments with shared bins will be collected on a weekly basis. (Refer to map on back page.)

REMEMBER

- Ensure containers are clean and empty
- Loose items only – do not bag
- NO plastic bags or bin liners
- Remove lids

Please refer to the Recycle Coach app if you are unsure.

If your bin is blown or knocked over, please pick up the contents and place back in your bin, to prevent it entering the stormwater system and causing litter in the street. Then call Glenorchy City Council's Customer Service on 03 6216 6800 for the contractor to return to empty your bin.

KERBSIDE RECYCLING TIPS

- Accidentally or carelessly mixing household waste into a recycling bin can make your recycling efforts a waste of time.
- Non-recyclables put into your recycling bin can contaminate an entire truck load of what could have been recycled but instead ends up in landfill.
- When it comes to recycling, if in doubt – leave it out! Better still find out yourself by visiting www.wastestartswithu.com.au or download the Recycle Coach app.
- By recycling, you help to look after the environment.
- Recycling reduces the amount of minerals dug up and trees cut down.
- Making products out of recyclable materials saves energy, reduces water use and cuts the amount of pollution and greenhouse gases we create.
- Purchase goods made from recycled material.

NO YOU CAN'T

Plastic bags	Whitegoods	Green waste
Nappies	China ware	Furniture
Polystyrene	Electrical goods	Car parts
Batteries	Clothes	Shoes
Wood	Old tools	Glass panes
String/rope	Paint/cleaners	Oil
Plastic film wrap	Coat hangers	Computers
Ceramics	Building materials	



GET THE APP
Download the **Recycle Coach** app, which will tell you what you CAN and CAN'T recycle.

YES YOU CAN

GLASS
Bottle and jars
(lids removed)



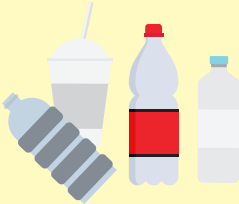
PAPER
Newspaper, office
paper and junk mail
(not shredded)



CARDBOARD
Milk cartons and
boxes (flattened)



PLASTIC
Juice and soft drink
rigid containers 1-5



METAL
Aluminium
and Tin cans



KERBSIDE RECYCLING

JACKSON ST WASTE MANAGEMENT CENTRE

OPENING HOURS:

Monday-Friday 7:30am – 4:00pm
Saturday 9:00am – 4:00pm
Sunday 9:30am – 4:00pm
Closed Christmas Day and Good Friday

No controlled waste/asbestos accepted after 2:30pm any day.
No commercial loads of waste accepted after 3:30pm weekdays.
No commercial loads of asbestos accepted on the weekend.

Some of the potential environment and public health issues related to landfill include:

- Loss of resources
- Dust and odour issues
- Land availability
- Greenhouse gas emissions
- Water contamination
- Noise issues
- Litter

In windy and extreme weather conditions the landfill disposal area may be closed for access and safety reasons. You may be asked to wait in your vehicle for short periods of time for safety reasons when waste is being covered and compacted.

When using the landfill please follow the signs and any directions given by tollbooth or landfill staff. The landfill has designated areas for waste including green organics, tyres, mattresses, whitegoods/metal, controlled waste, concrete and recyclables.

DOMESTIC ASBESTOS DISPOSAL

The Jackson Street Landfill is licensed to accept both commercial and domestic loads of asbestos

Packaging of all waste asbestos products must comply with the Work Health and Safety Regulations 2012 and should also adhere to the guidelines set out by Glenorchy City Council for domestic disposal.

These guidelines are available at www.jacksonstlandfill.com.au or by phoning toll booth 03 6216 6712 or customer service on 03 6216 6800.

Please note: Under NO circumstances should asbestos be placed in the Kerbside waste/recycling/FOGO bins.

For further information on asbestos in your home please contact WorkSafe Tasmania on 1300 366 322 or visit www.asbestosawareness.com.au

LANDFILL DISPOSAL CHARGES 2021/22

Please note that all charges include a 10% Goods and Services tax. The discretion of the Toll Booth Officer is final.

Waste type	Charges 2021/22 (inc GST)
Minimum gate fee	\$12 per visit
Passenger tyres	\$10 each
Light truck/4wd tyres	\$20 each
Clean fill (conditions apply)	\$22/ tonne
Brick/concrete/rubble	\$64/ tonne
Green waste/vegetation	\$79/tonne
General waste – domestic GCC residents (cars and single axle trailers only)	\$84/tonne
General waste – commercial/large vehicles and non GCC residents	\$104/tonne
Mattresses	\$20 each
Mixed waste – commercial/industrial/ demolition/construction (by negotiation)	\$157/tonne
Metal	\$105/tonne
Recycling	No charge
Domestic quantity of double wrapped asbestos	\$50/boot load \$100/small trailer load
Asbestos/controlled waste/special burial (conditions apply)	\$150/special waste handling fee plus \$180/tonne

CONDITIONS

*A driver’s licence or valid ID will need to be presented to the tollbooth operator to receive the residents’ discounted general waste rate.

**Clean fill: maximum particle size of 200mm which is suitable for cover material at the landfill and contains no organic material, steel, wire or timber.

*Brick/concrete/rubble: includes building and demolition waste, rock fill, road pavement material, concrete, bricks but excluding large quantities of timber and clean fill.

BULK QUANTITIES (>1000 tonne) – call Toll Booth for prior approval on charges.

For more information contact: Toll Booth 03 6216 6712 or Glenorchy City Council Customer Service 03 6216 6800 or visit www.jacksonstlandfill.com.au

FREE WEEKENDS FOR WASTE DISPOSAL

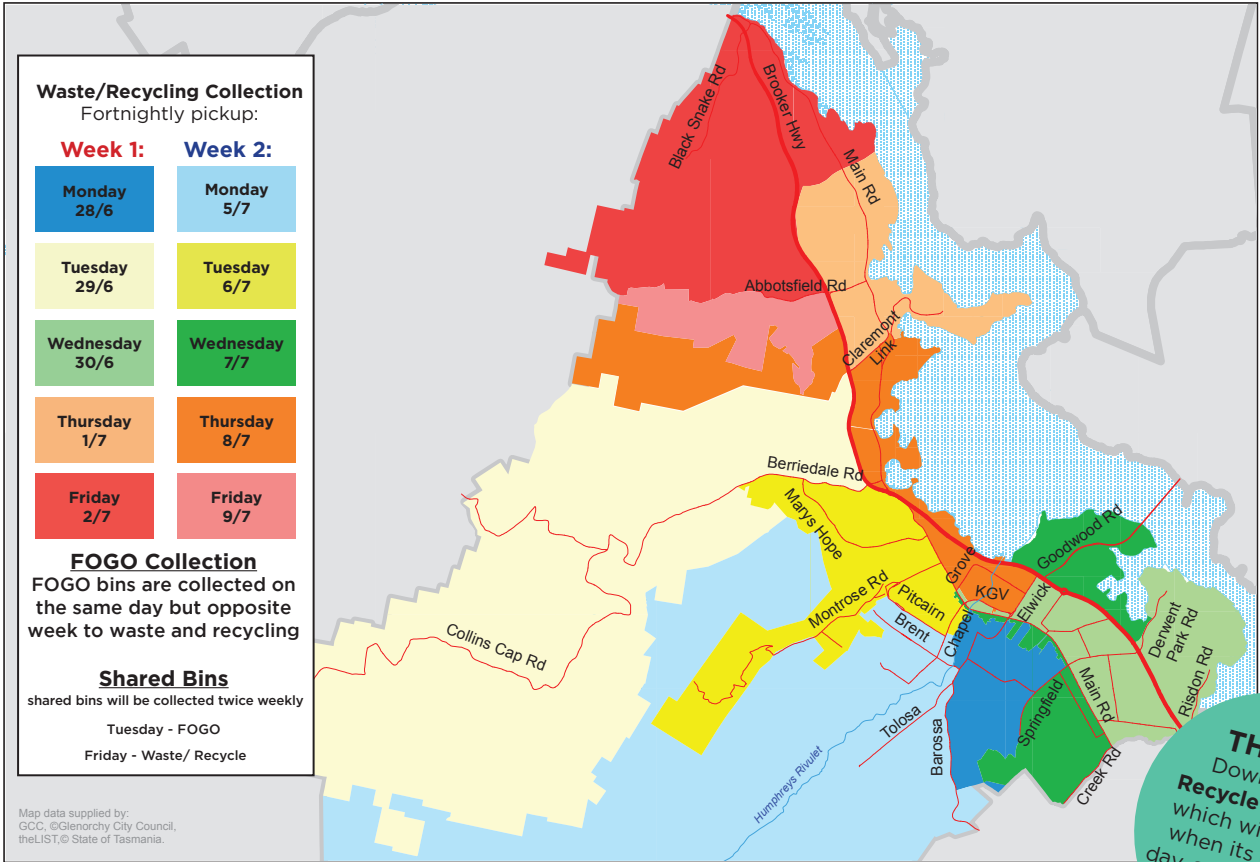
FREE ENTRY is for Glenorchy residents only. Only domestic quantities of waste materials will be accepted, such as a standard ute load or box trailer. To gain free entry, show your driver’s licence to the tollbooth operator to verify you are a resident.

Free entry does not apply to waste such as tyres, paints, chemicals, asbestos, other hazardous waste, or commercial waste.

The following are free entry weekends -

There will be a free weekend for waste disposal at the Jackson Street landfill at a date TBA in October 2021 (weather permtting).

JACKSON ST WASTE MANAGEMENT CENTRE



GET THE APP
Download the **Recycle Coach** app which will alert you when its collection day, and tell you what you can and can't recycle!

Please refer to calendar on front page for collection week

Glenorchy City Council, 374 Main Road Glenorchy | (03) 6216 6800 | E gccmail@gcc.tas.gov.au
www.wastestartswithu.com.au | www.gcc.tas.gov.au