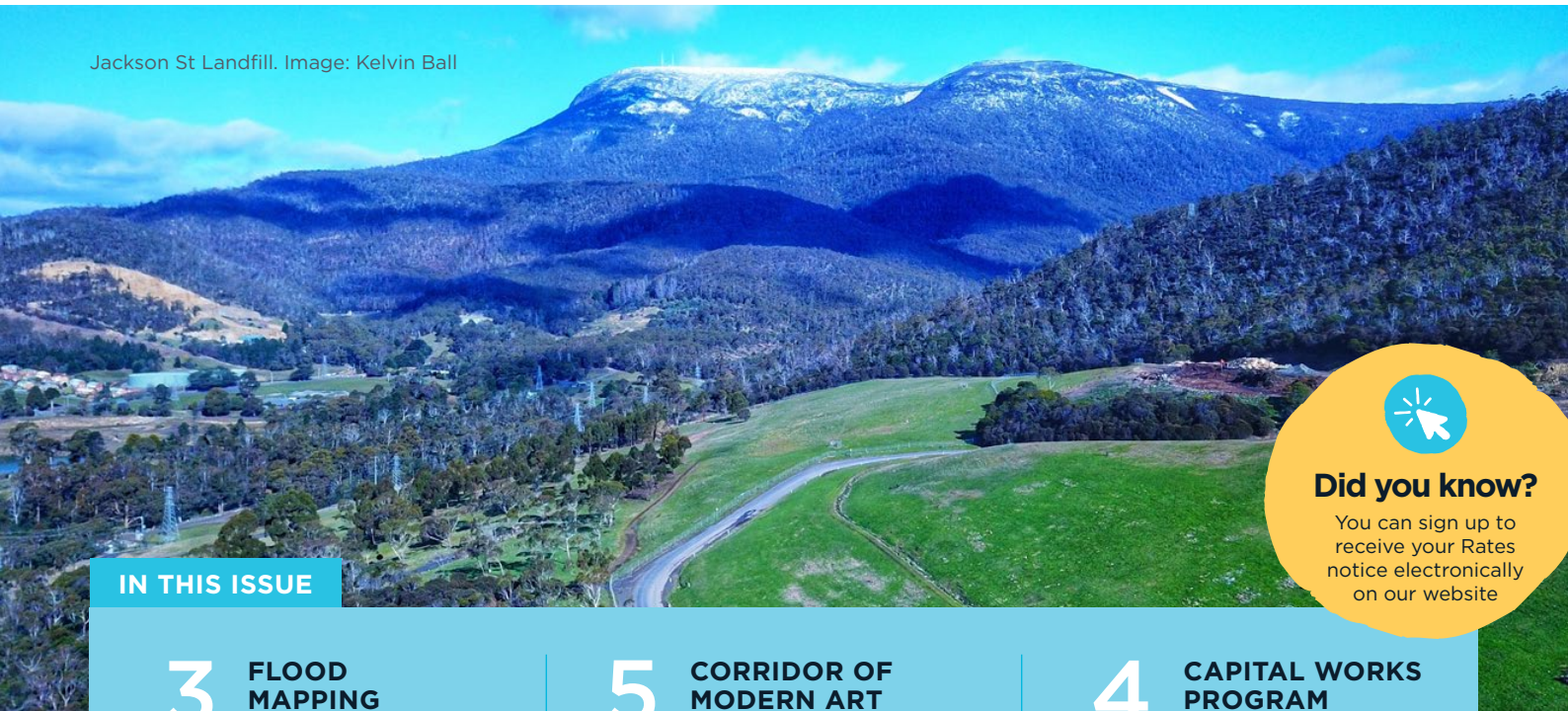


Our Glenorchy

Jackson St Landfill. Image: Kelvin Ball




Did you know?
You can sign up to receive your Rates notice electronically on our website

IN THIS ISSUE

3 FLOOD MAPPING
Find out about flood prone areas near you

5 CORRIDOR OF MODERN ART
Take the scenic route from Moonah to MONA

4 CAPITAL WORKS PROGRAM
See what is in the pipeline for our city

Looking ahead for 2021/22

Glenorchy City Council voted unanimously to adopt its 2021/22 budget, with a strong focus on safety, sustainability, and growth, at the Special Council Meeting held on 21 June and streamed live on the Council Facebook page.

Due to the ongoing economic impacts of COVID-19, the budget forecasts a deficit of \$1.3 million for the next financial year.

In considering the 2021/22 budget, Council proposed to increase its rates by 2.5%.

In the previous 2020/21 budget, Council provided \$1.9 million in relief to ratepayers through the COVID-19 Rates Relief Rebate.

This ensured residents did not pay any increase in rates, fees and charges on their 2020 rates bill, by rebating the 2.5% rates increase and other fee increases.

“This budget is about improving Council’s financial stability, identifying savings measures and investing in economic growth initiatives to capitalise on the unprecedented levels of development and investment in our city”

Now that the initial uncertainty around the COVID-19 pandemic has eased, this year’s rate increase will be in addition to last year’s 2.5% increase, which was rebated as part of the Community Assistance Package.

There are increases in Council’s waste collection fees of between \$12.00 and \$17.00 for most households

(depending on the waste services being provided), to cover the increasing cost of waste management and also absorb the Tasmanian Government’s proposed \$20 per tonne waste levy.

As with rates, this year’s waste charge increases will be in addition to last year’s increases, which were rebated as part of the COVID-19 assistance measures.

Acting Mayor, Bec Thomas, said the budget was developed to ensure our community can continue its recovery from the COVID-19 pandemic and set the city up to thrive in the long-term.

“In developing the 2021/22 budget, our focus has been on safety, sustainability, and growth,” Acting Mayor Thomas said.

“This budget is about improving Council’s financial stability, identifying

Continued on page 2



Continued from front page

savings measures and investing in economic growth initiatives to capitalise on the unprecedented levels of development and investment in our city," she said.

"The COVID-19 Community Assistance Package we passed last year did not come without cost. Despite the steps we took to limit the fallout from COVID, and signs of growth in our economy, it will still take ongoing discipline and careful financial management to get our operating budget back in the black.

"We have meticulously worked through our finances, to ensure we continue to support our community, and can deliver on our promise to limit this year's rates increase to 2.5%."

With \$1.9 billion in development currently proposed for Glenorchy over the coming years, and unprecedented levels of development and investment in the city, a record \$25m capital works program is proposed for 2021-22.

The capital works program includes a range of projects to maintain and upgrade Glenorchy's important

infrastructure to cope with increased demands now and into the future, while continuing to stimulate the economy to promote growth.

It also increases Council's investment in flood mitigation and bushfire safety measures.

FOR MORE INFORMATION about the budget and what's happening in Glenorchy head to the Council website: gcc.tas.gov.au



Jackson St Landfill extension to begin in September

Council has awarded the contract for the design and construction of the Jackson St Landfill extension to Downer EDI. Design of the extension is now under way due to be submitted to the Environmental Protection Authority (EPA) in July 2021. The EPA, as the regulatory authority, will then review the proposed design and ultimately provide approval to commence the construction works. After approval is granted, works are expected to commence in September 2021 and be completed by February 2022.

The Jackson St Landfill extension is one part of Council's broader waste strategy and will provide an approximate 10 additional years to the active life of the landfill. Council is committed to sustainably manage our

city's resources, including the diversion of useful resources away from landfill and promoting waste education in the community.

FOR MORE INFORMATION:

Jackson St Landfill website: jacksonstlandfill.com.au

Did you know?

Between July 2020 and May 2021 we diverted 26,661 TONNES of waste away from landfill. Through several diversion streams we were able to separate out whitegoods for metal recycling, green waste for landfill mulching operations and mattresses for recycling. These useful materials can be recycled and, in the case of green waste, avoid ending up in landfill where harmful gases are emitted, damaging the environment.

The residential FOGO service collecting organic material from Glenorchy households has also diverted approximately 6,638 tonnes between February 2020 and May 2021. Organic waste from food scraps and garden waste is converted into rich compost used by Tasmanian farmers.

Remember!

Sorting our waste is crucial. We're currently tackling ongoing issues with contamination in our Recycling and FOGO collections which spoils the efforts of the community as a whole. Make sure you're using your kerbside bins correctly and check out our dedicated website: wastestartswithu.com.au or download the Recycle Coach app for tips and tricks.

Not tech savvy? Contact our waste team for hard copies of our waste calendar to stick on the fridge!



Flood study results released

The results of flood modelling studies are now available for public viewing following months of research by Council’s Hydraulics team.

Senior civil engineer, Patrick Marshall, said Glenorchy’s urban catchments were subject to flooding during high rainfall events.

“Major flood events, most recently recorded in May 2018, have caused significant losses and damage to Council’s infrastructure and also to private property,” he said.

The flood modelling study produced detailed maps showing the extent of flooding in key areas. The study considered a range of different scenarios, including the impact of a sea level rise and change in rainfall intensity caused by climate change.

Detailed information about flood prone areas allows Glenorchy residents and Council alike, to plan ahead in preparation for future flood events.

“This will not prevent flooding, but we can mitigate the impact and prioritise the upgrade of stormwater

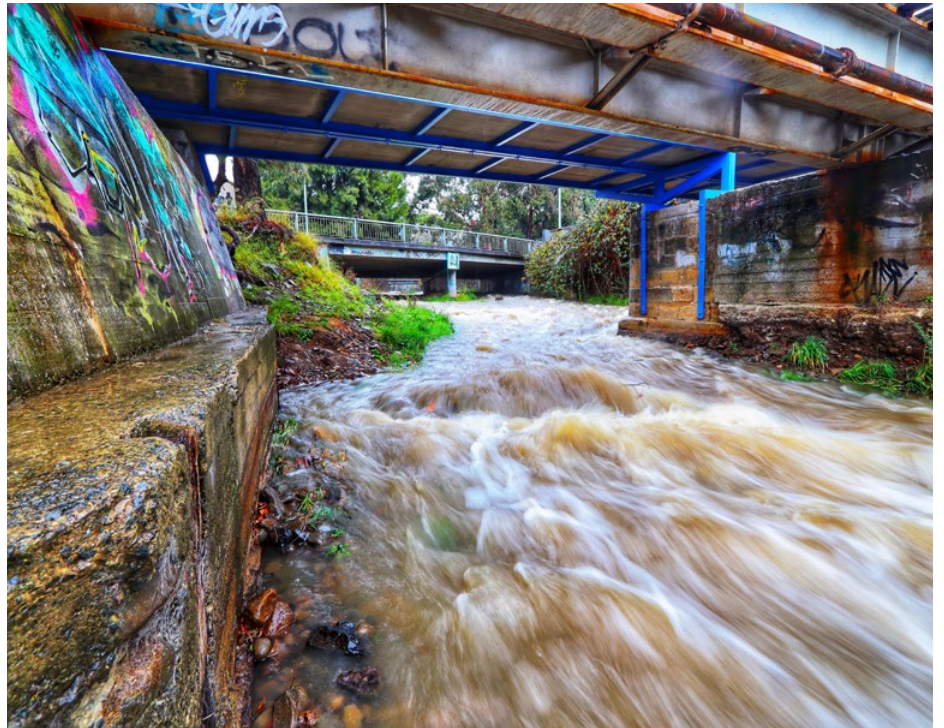


Image: Kelvin Ball

infrastructure in areas shown to have a higher risk of flooding,” said Mr Marshall.

The study will also help inform emergency responses in future flood events, implement improved town planning guidelines for future development, and determine the minimum floor height for properties to reduce the likelihood of flooding.

It is recommended that all properties in identified flood prone areas have adequate flood insurance.

Detailed flood extent maps will be available to be viewed at Council Chambers from 1 July to 28 July 2021, and can also be viewed on Councils website: gcc.tas.gov.au/residents/your-home/floods-and-stormwater

CBD Revitalisation – the end is nigh

The end is in sight for the Glenorchy CBD revitalisation works on Main Road. The major capital works project to completely upgrade and improve the central hub of our city, is due to be completed by September 2021.

The project, which was planned in stages across three years, both for consideration of the works required and to manage the cost to the ratepayer over a longer period, has remained steadfastly on schedule and on budget. The final stage of works is underway at the northern end of the CBD and works are scheduled to be completed in late September.

The community are already benefitting from the CBD’s completed spaces with brand new public seating, wider footpaths and dedicated spaces

for disability parking and maxi taxis, already in use. The CBD project, at its heart, seeks to transform this space into a lively pedestrian hub for shoppers and visitors alike to spend time and support the local businesses. Enhanced LED street lighting and a lowered speed limit promote a calmer and safer environment for the community to enjoy both day and night.

As the weather improves and the days get longer, we encourage you to come along a check out the new CBD space, bring the family, stroll to the various eateries and retailers and enjoy what our Glenorchy CBD has to offer.

FOR MORE INFORMATION: Find out more about this project on the website: gcc.tas.gov.au or call Council on 6216 6800.





Key projects and programs for 2021/22



\$8.4m for a range of road and transport projects, including patching and reconstruction, \$3m for road resurfacing and \$2.2m on improving the condition of our footpaths with a focus on fixing trip hazards throughout the city.

\$4.7m for new sport and recreation facilities funded by Australian Government grants, including:

- new destination playgrounds at the Montrose Foreshore and Giblins Reserve
- upgraded soccer facilities at KGV
- a new amenities building at the Eady Street Cricket Ground.

\$3.5m to constructing a new cell at the Jackson Street Landfill to extend its life by up to ten years.

\$1.5m for a range of projects under Council's Economic Recovery Program including:

- \$135k to begin the implementing the Greater Glenorchy Plan, including activities to stimulate growth in the three CBD precincts in the city
- \$460k to fund the relocation of the Southern City BMX track from the Berriedale Peninsula to Tolosa Park
- \$200k to fund capital works to support the implementation of the Marine and Innovation Master Plan for Prince of Wales Bay

\$1.3m on flood mitigation projects and extending Council's stormwater network to unserved areas.

\$350k for the upgrade of public toilets at Giblins Reserve.

\$280k to upgrade the footpath linking the Intercity Cycleway through to MONA.

\$150k to improve tracks and trails in our reserves, including upgrading Lutana Woodlands' paths and the fire and mountain bike trail network in Wellington Park.

Council voted on its proposed 2021/22 budget at a Special Council Meeting on 21 June 2021.

For more information on Council works in your area go to the Works section of our website: gcc.tas.gov.au/services/works

Pedalling a visual feast on the cycleway

The Corridor of Modern Art (COMA) is complete! 10 large scale art murals created by local Tasmanian artists are now a permanent feature on the side of buildings and former blank spaces located along the rail corridor linking Moonah to MONA.

This collection of murals define a key tourism asset along the Intercity Cycleway through Glenorchy City. The project, run in collaboration with Vibrance, worked closely with local creatives to promote an explosion of creativity on a once dull route through the City. Residents and tourists alike can traverse a vibrant corridor of colourful installations and artwork creating a destination in itself to be enjoyed by all.

Artists were selected through an open-call process, with over 70 artists applying for the opportunity. The final



Art mural on the side of Northgate by artist Jamin. Image: Kelvin Ball

line-up, which included three Glenorchy based creators, completed their pieces at various stages throughout May and June. You can view incredible works by Todd Jacobson, Ben Jacobson, Neils Oeltjen, Jamin, Tom O'Hern, Sarah Wells, Tom Deams, Bec Adamczewski, Jennifer Tyers, and Joel Gadjia.

Grab a bike or take a walk along the Corridor of Modern Art, pick your favourite piece and enjoy the visual feast along the way.

FOR MORE INFORMATION:

Follow the project on Instagram @CorridorOfModernArt or read about it on our website: gcc.tas.gov.au



Showcase Moonah - Street mural painted by the community and artist Melski McVee

Have you met Moonah?

An exciting art and creative placemaking project recently took over the Moonah suburb with a series of 17 community projects from events, to art, cultural activities, urban greening and markets.

Residents and visitors were delighted and enthralled as street markets, community art murals, guerrilla style green spaces and spontaneous classical quartets dressed in flannelette burst onto the Moonah streets throughout May and June.

The umbrella project, titled Showcase Moonah, was aimed at attracting more people to help activate Moonah, promote local artists, creatives and innovators and everything the suburb has to offer. The project team funded local ideas for mini projects that celebrated the gritty, urban character and diverse and multicultural people of Moonah and opened the possibilities for similar events in the future.

FOR MORE INFORMATION:

Check out the project on our website: gcc.tas.gov.au



Let's talk, Glenorchy

Have your say!

Are you being served?

We are proud to serve our community and provide the best customer service possible. One of the ways we can ensure we are doing our best is to ask for feedback so we can do better. Each year, we are committed to asking the community - tell us, how are we going?

Head to our Let's Talk, Glenorchy engagement website (letstalk.gcc.tas.gov.au) to leave your comments or complete the survey. Hard copies are available from Council, please call 6216 6800 or email: gccmail@gcc.tas.gov.au to request a copy.

The Customer Service survey is open now until 31 July 2021.



Glenorchy Council is currently going through a by-election process to elect a new Mayor and incoming Alderman.

Voters in Glenorchy will receive ballot papers via post. The vote is non compulsory and polling closes 2pm Tuesday 20 July. We look forward to announcing the new positions in our next edition. For more information visit the Tasmanian Electoral Commission: www.tec.tas.gov.au



**Acting Mayor
Bec Thomas**

P 0407 461 273
E Bec.Thomas@gcc.tas.gov.au

Healthy Communities Advisory Committee, General Manager's Performance Review Committee, Glenorchy Planning Authority



**Alderman
Jan Dunsby**

P 0419 328 469
E Jan.Dunsby@gcc.tas.gov.au

Glenorchy Planning Authority, Glenorchy Access Advisory Committee, Safer Communities Committee, Citizen and Young Citizen of the Year Selection Committee



**Alderman
Peter Bull**

P 0417 038 749
E Peter.Bull@gcc.tas.gov.au

Audit Panel, Citizen and Young Citizen of the Year Selection Committee



**Alderman
Melissa Carlton
OAM**

E Melissa.Carlton@gcc.tas.gov.au

Glenorchy Access Advisory Committee



**Alderman
Gaye Richardson**

P 0417 532 566
E Gaye.Richardson@gcc.tas.gov.au

General Manager's Performance Review Committee, Glenorchy Carols Committee, Glenorchy Arts and Culture Advisory Committee



**Alderman
Kelly Sims**

E Kelly.Sims@gcc.tas.gov.au

Glenorchy Planning Authority, Glenorchy Arts and Culture Advisory Committee, Healthy Communities Advisory Committee



**Alderman
Simon Fraser**

P 0406 796 601
E Simon.Fraser@gcc.tas.gov.au

Glenorchy Emergency Management Committee, Glenorchy LEARN Committee



**Alderman
Steven King**

P 0414 898 095
E Steven.King@gcc.tas.gov.au

Glenorchy Carols Committee



**Alderman
Angela Ryan**

E Angela.Ryan@gcc.tas.gov.au

Glenorchy Planning Authority Audit Panel



Stay in touch!

We'd love to hear your thoughts and feedback on how we can best serve our community. Stay connected with your Council.

P 6216 6800 **E** gccmail@gcc.tas.gov.au
W gcc.tas.gov.au **FB** /GlenorchyCityCouncilOfficial

📍 374 Main Road, Glenorchy | Mon-Fri: 8.30am to 5pm