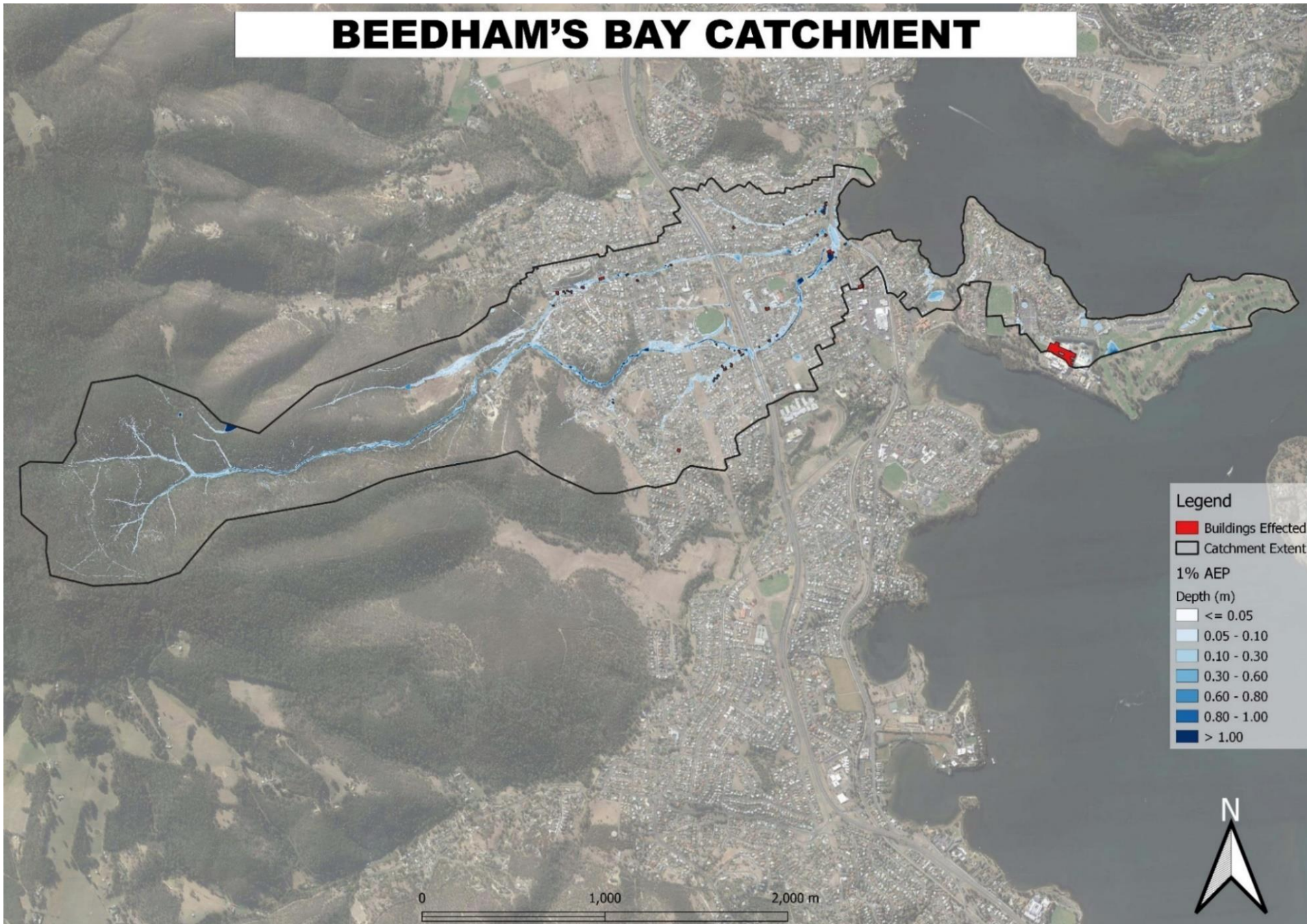
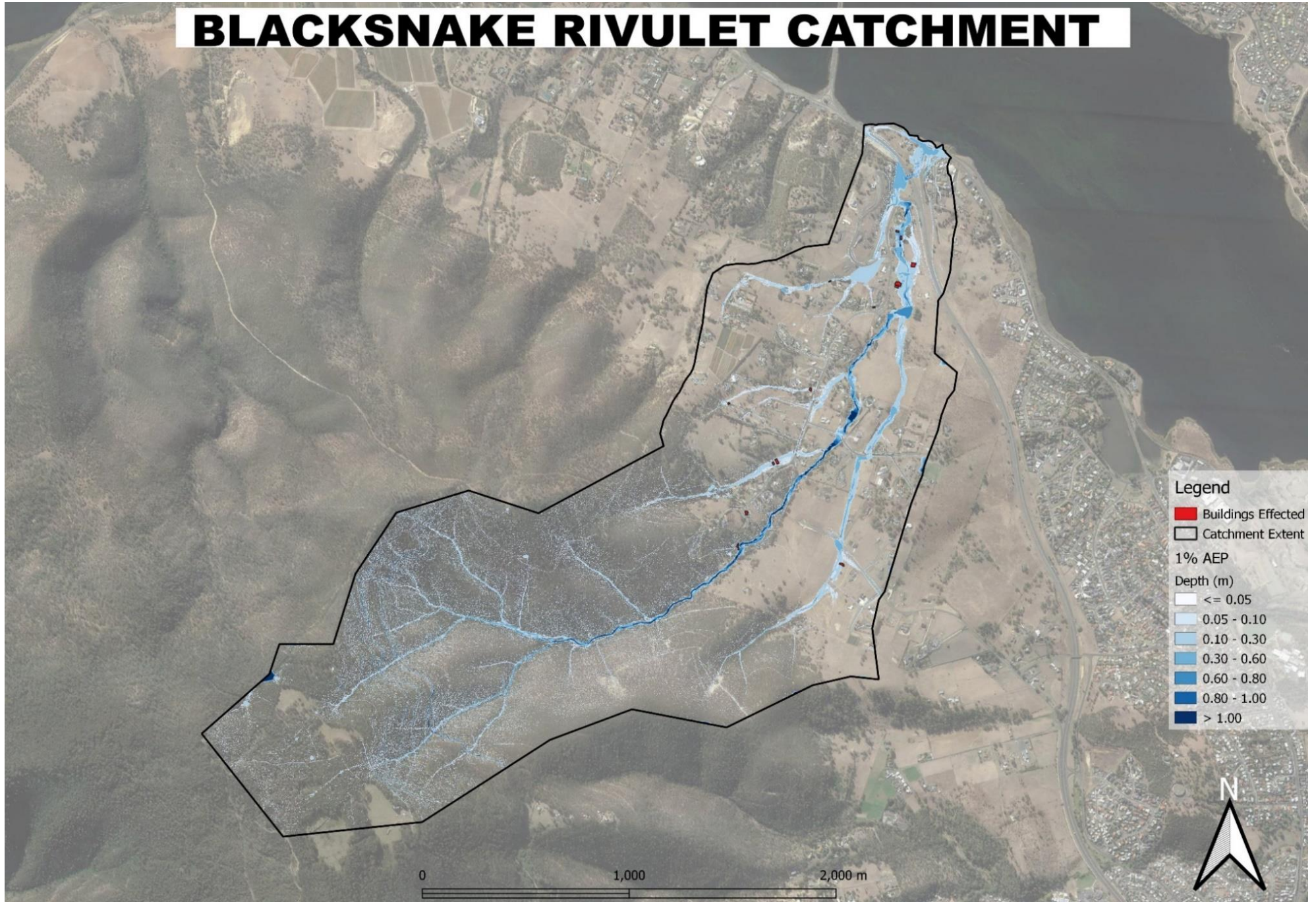


BEEDHAM'S BAY CATCHMENT



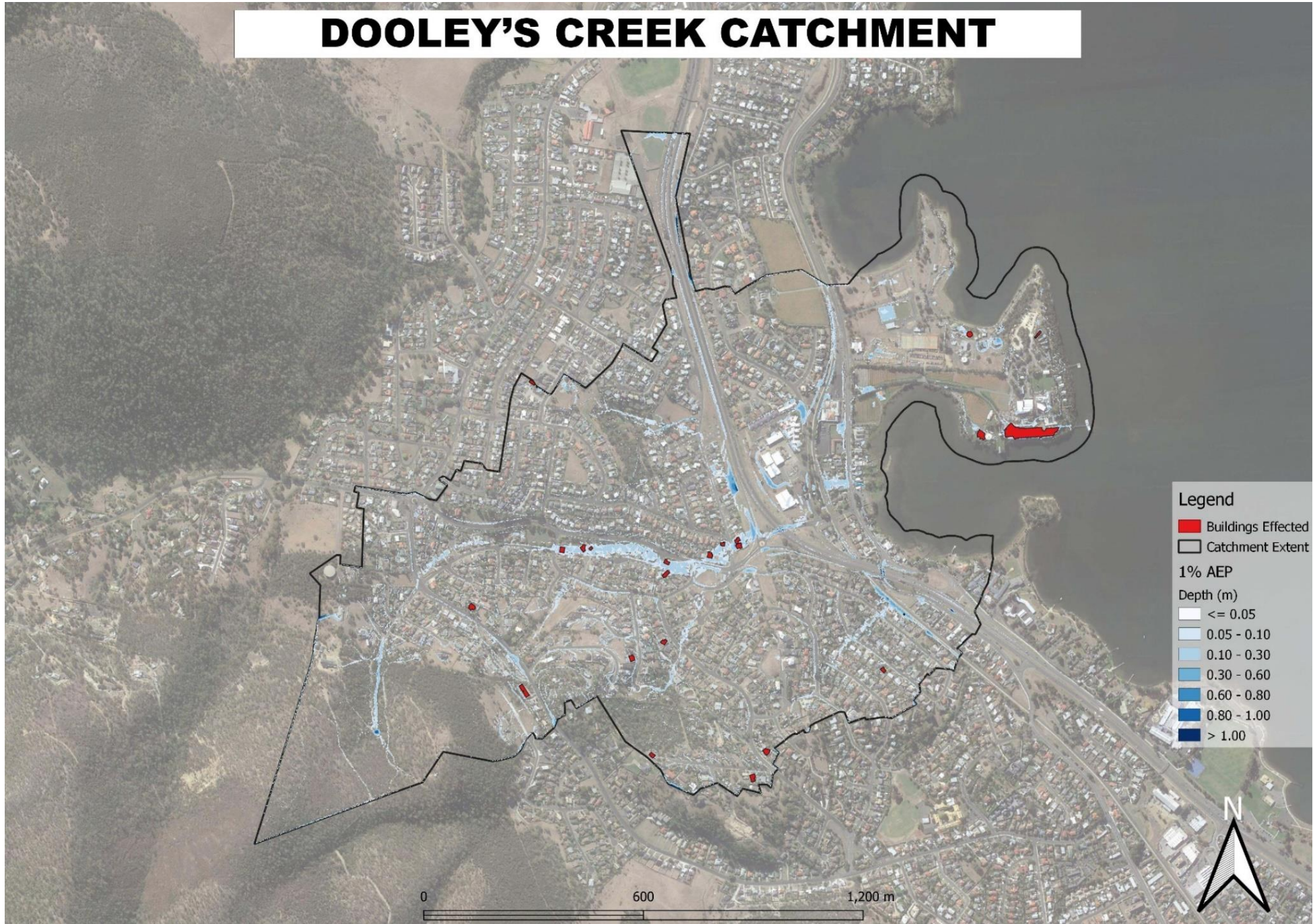
BLACKSNAKE RIVULET CATCHMENT



CONNEWARRE BAY CATCHMENT



DOOLEY'S CREEK CATCHMENT



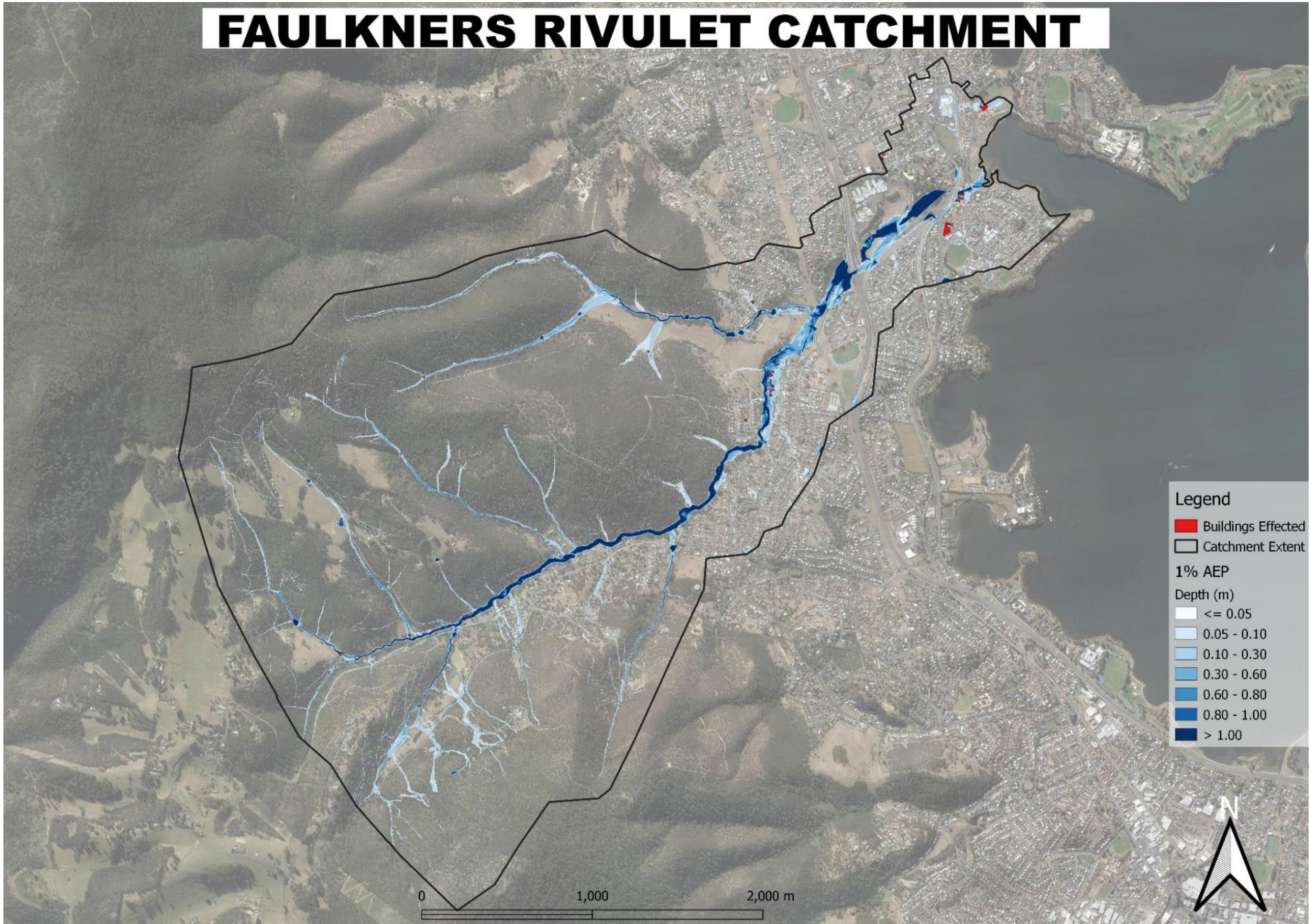
DOWSINGS POINT CATCHMENT



Legend

- Buildings Affected
- Catchment Extent
- 1% AEP
- Depth (m)
- <= 0.05
- 0.05 - 0.10
- 0.10 - 0.30
- 0.30 - 0.60
- 0.60 - 0.80
- 0.80 - 1.00
- > 1.00

FAULKNERS RIVULET CATCHMENT



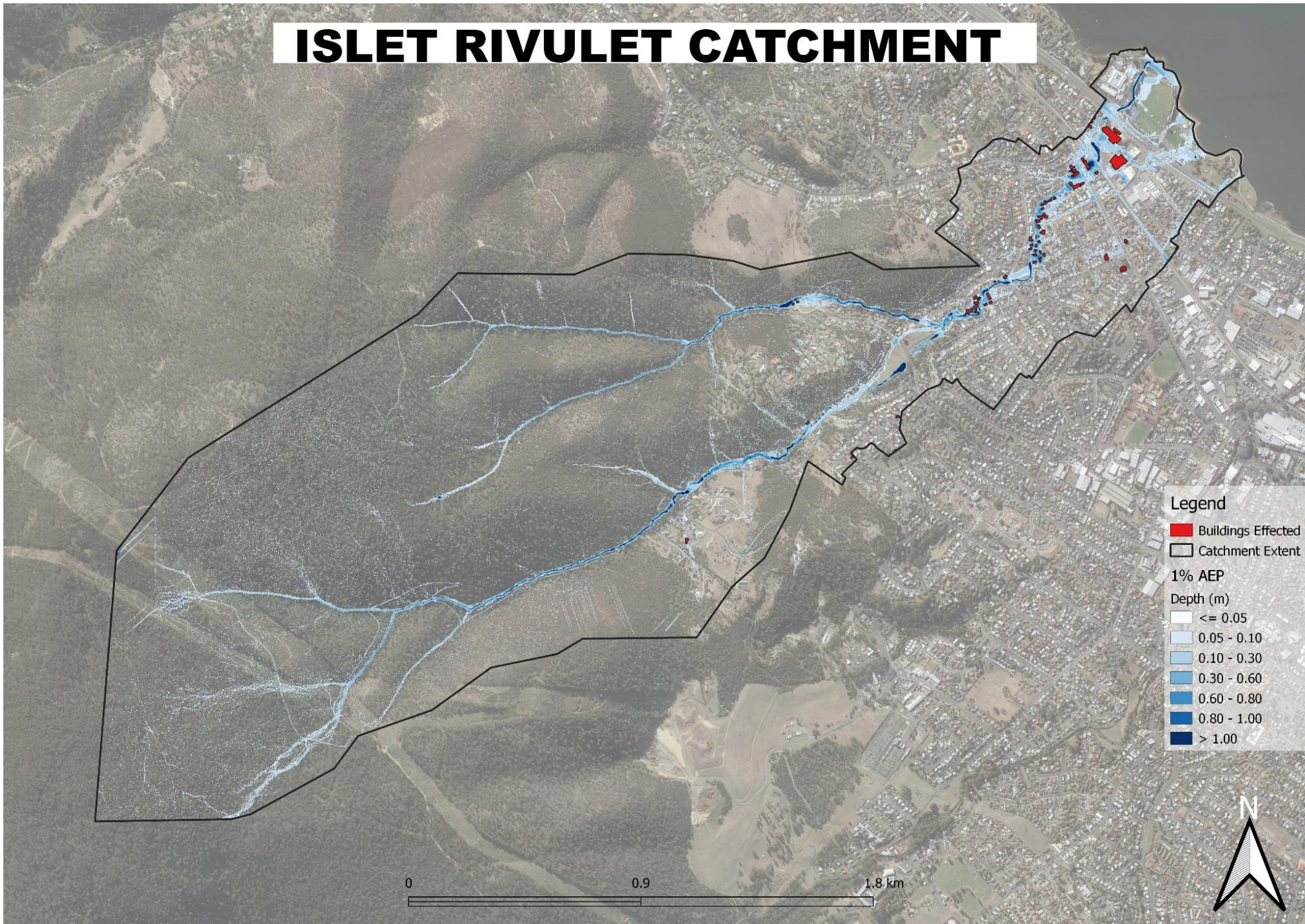
GOODWOOD CATCHMENT



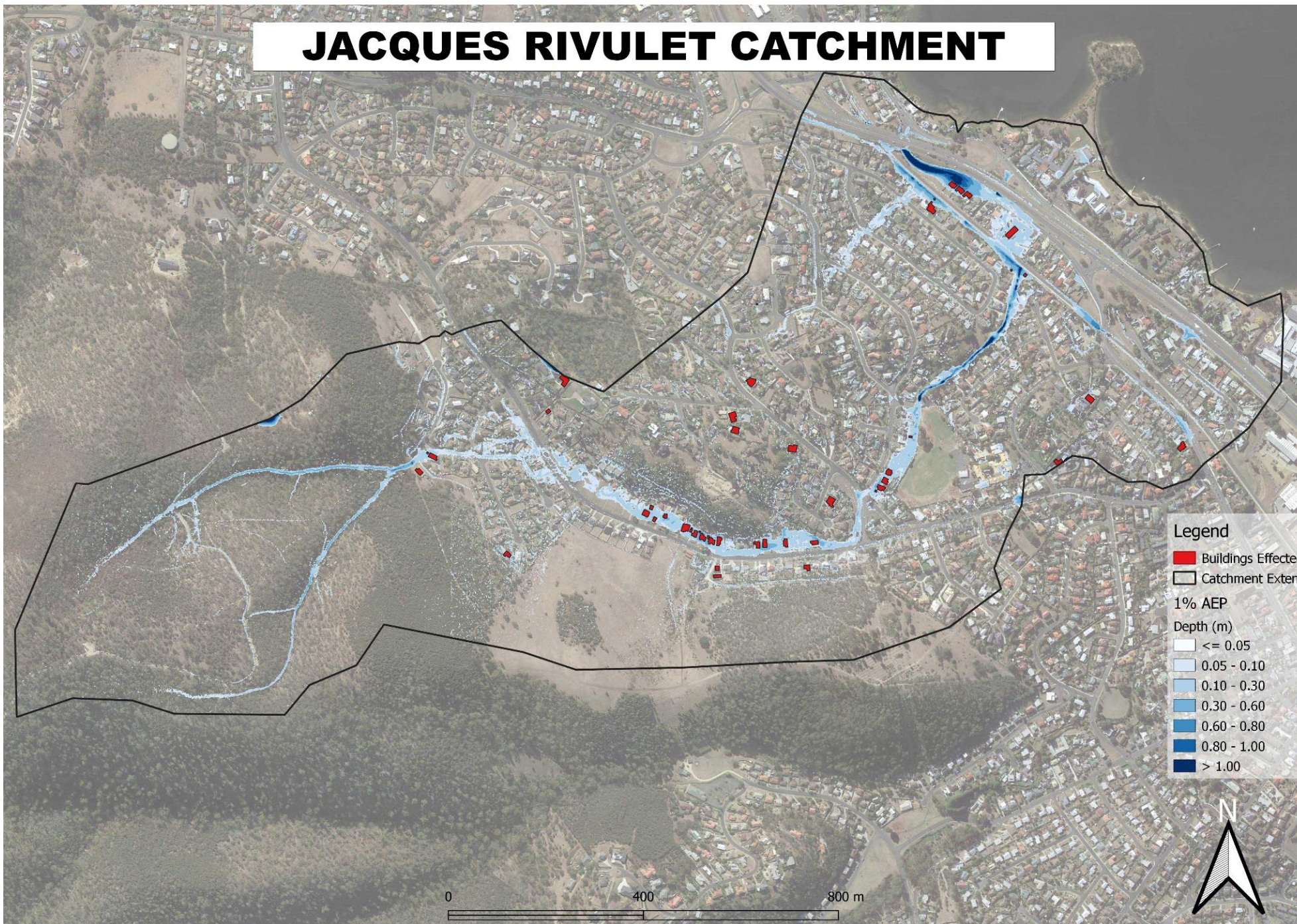
GRANTON CATCHMENT



ISLET RIVULET CATCHMENT



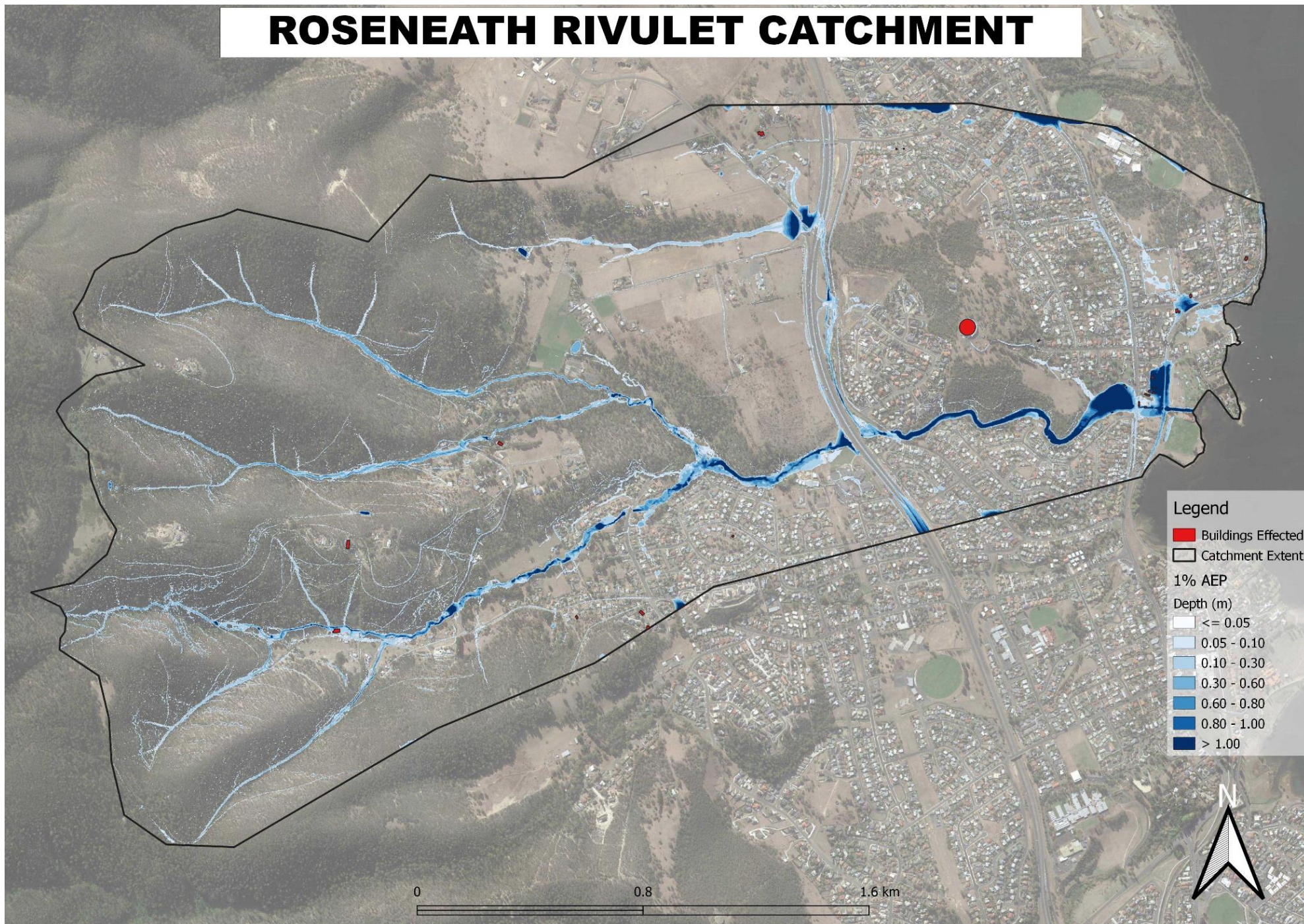
JACQUES RIVULET CATCHMENT



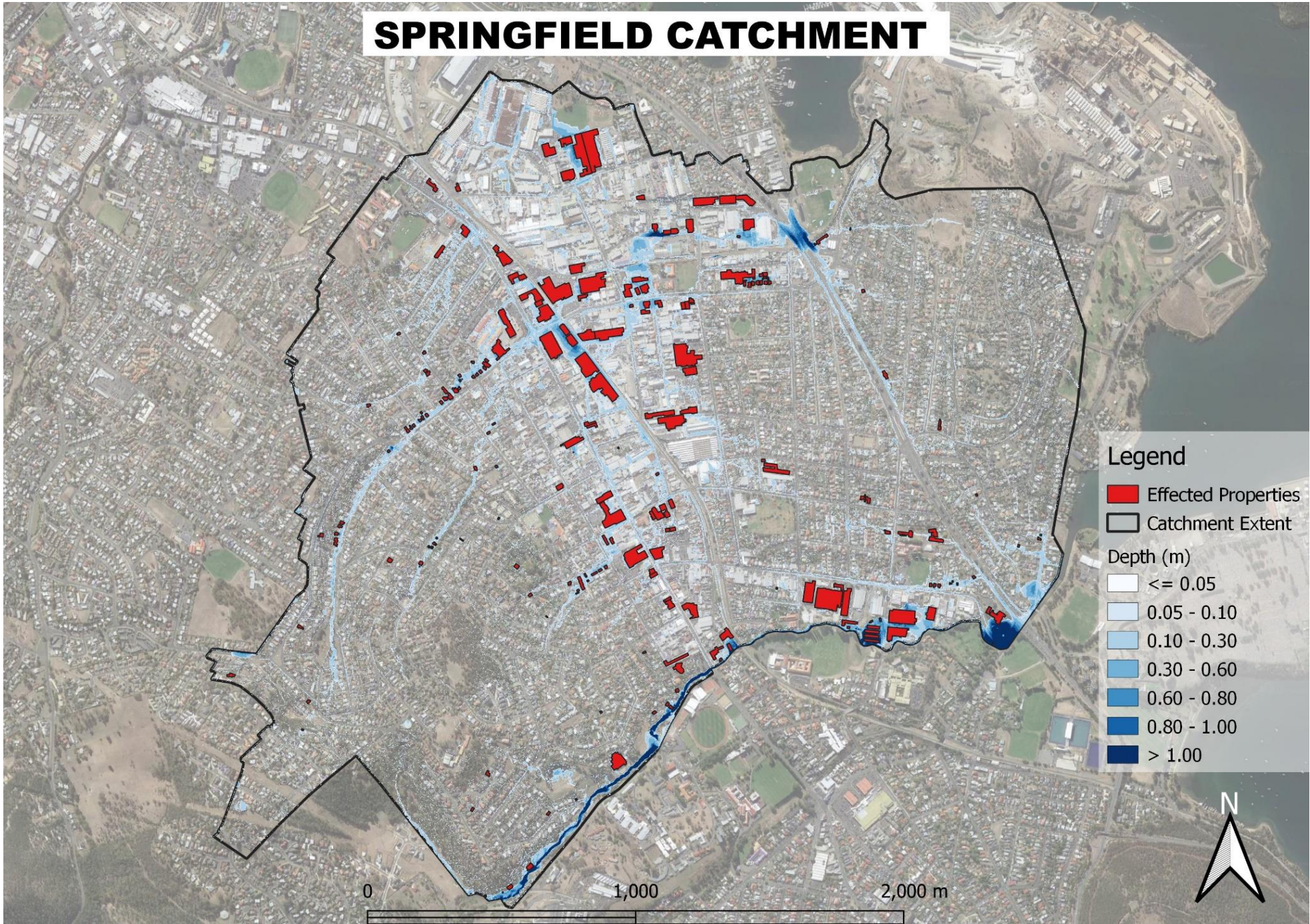
LOWESTOFT BAY CATCHMENT



ROSENEATH RIVULET CATCHMENT



SPRINGFIELD CATCHMENT



ZINC WORKS CATCHMENT

